

Presented by

Loyola's Office of Sustainability · Baumhart Center · Supply and Value Chain Center

Sustainability in Transportation

TUESDAY, JULY 21 · 12:00-1:00 P.M. CDT



LOYOLA
UNIVERSITY CHICAGO



Aaron Durnbaugh

Director of Sustainability
Loyola University Chicago

AGENDA

Welcome

Aaron Durnbaugh, Director of Sustainability, Loyola University Chicago (moderator)

Presentations & Panel

Erin Aleman, Executive Director, Chicago Metropolitan Agency for Planning

Anthony Maietta, Life Scientist, Region 5 Office, U.S. Environmental Protection Agency's Air and Radiation Division

Roberto Requejo, Project Director, Elevated Chicago

Harry Haney, Director, Supply & Value Chain Center, Loyola University Chicago (moderator)

Questions from Moderator & Audience

Leading for Sustainability



Loyola has been consistently awarded for its climate change leadership, including recognition by the US Department of Education, AASHE STARS, the Sierra Club, and Princeton Review.

Leading for Purpose in Business



The Financial Times' recent report on Responsible Business Education identified Quinlan as one of four business schools globally that is leading in social purpose.


We are Preparing Leaders for Impact

WEBINAR SERIES SUSTAINABILITY MATTERS

Presented by
Loyola's Office of Sustainability · Baumhart Center · Supply and Value Chain Center

The Urgency of Climate Action

TUESDAY, JULY 14 · 12:00-1:00 P.M. CDT



LOYOLA
UNIVERSITY CHICAGO

WEBINAR SERIES SUSTAINABILITY MATTERS

Presented by
Loyola's Office of Sustainability · Baumhart Center · Supply and Value Chain Center

Sustainability in Transportation

TUESDAY, JULY 21 · 12:00-1:00 P.M. CDT



LOYOLA
UNIVERSITY CHICAGO

WEBINAR SERIES SUSTAINABILITY MATTERS

Presented by
Loyola's Office of Sustainability · Baumhart Center · Supply and Value Chain Center

Sustainability in Buildings

TUESDAY, JULY 28 · 12:00-1:00 P.M. CDT



LOYOLA
UNIVERSITY CHICAGO

WEBINAR SERIES SUSTAINABILITY MATTERS

Presented by
Loyola's Office of Sustainability · Baumhart Center · Supply and Value Chain Center

A Sustainable Chicago for All

TUESDAY, AUGUST 4 · 12:00-1:00 P.M. CDT



LOYOLA
UNIVERSITY CHICAGO



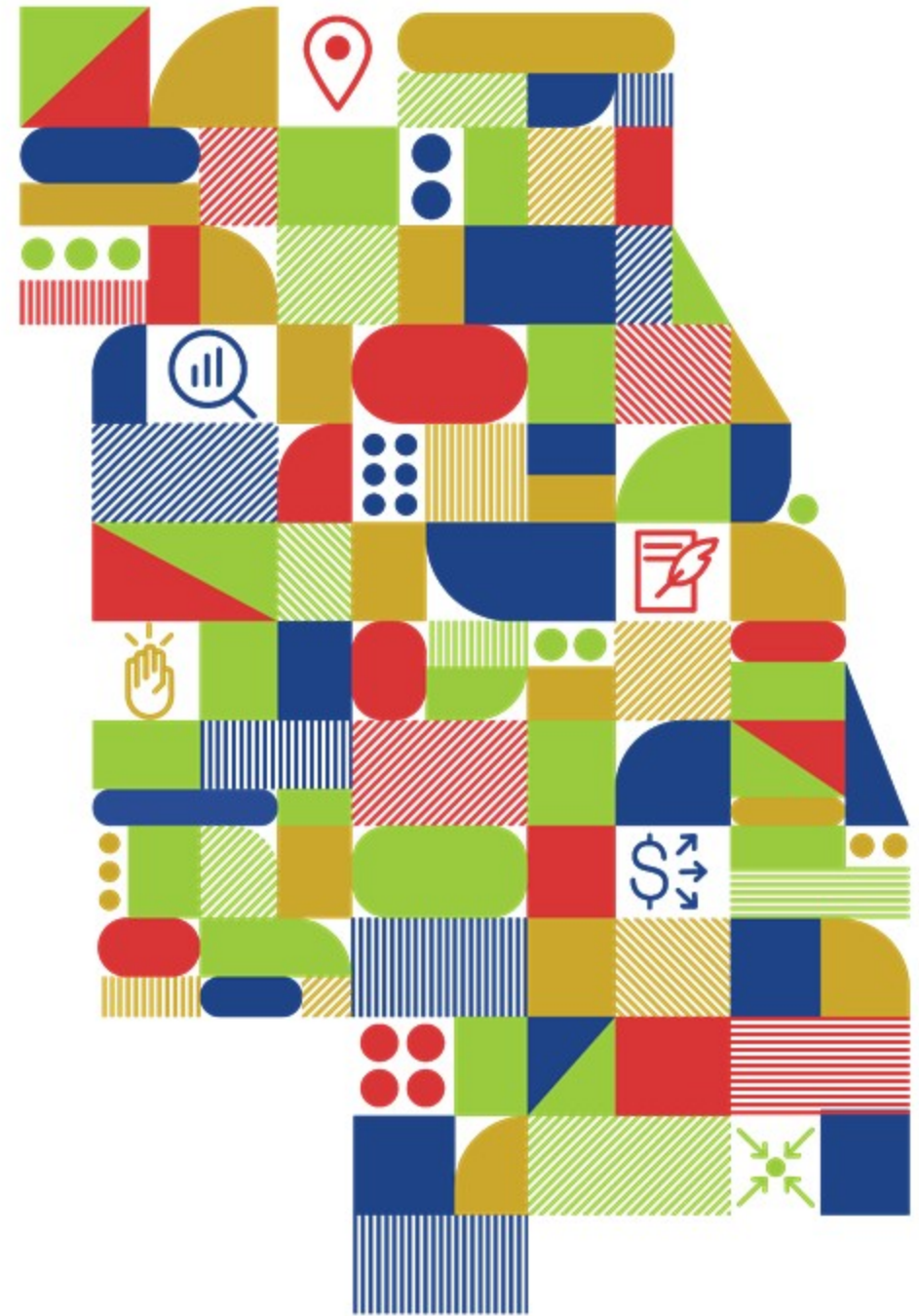
Erin Aleman

Executive Director
Chicago Metropolitan Agency for Planning



Planning for a post-COVID world

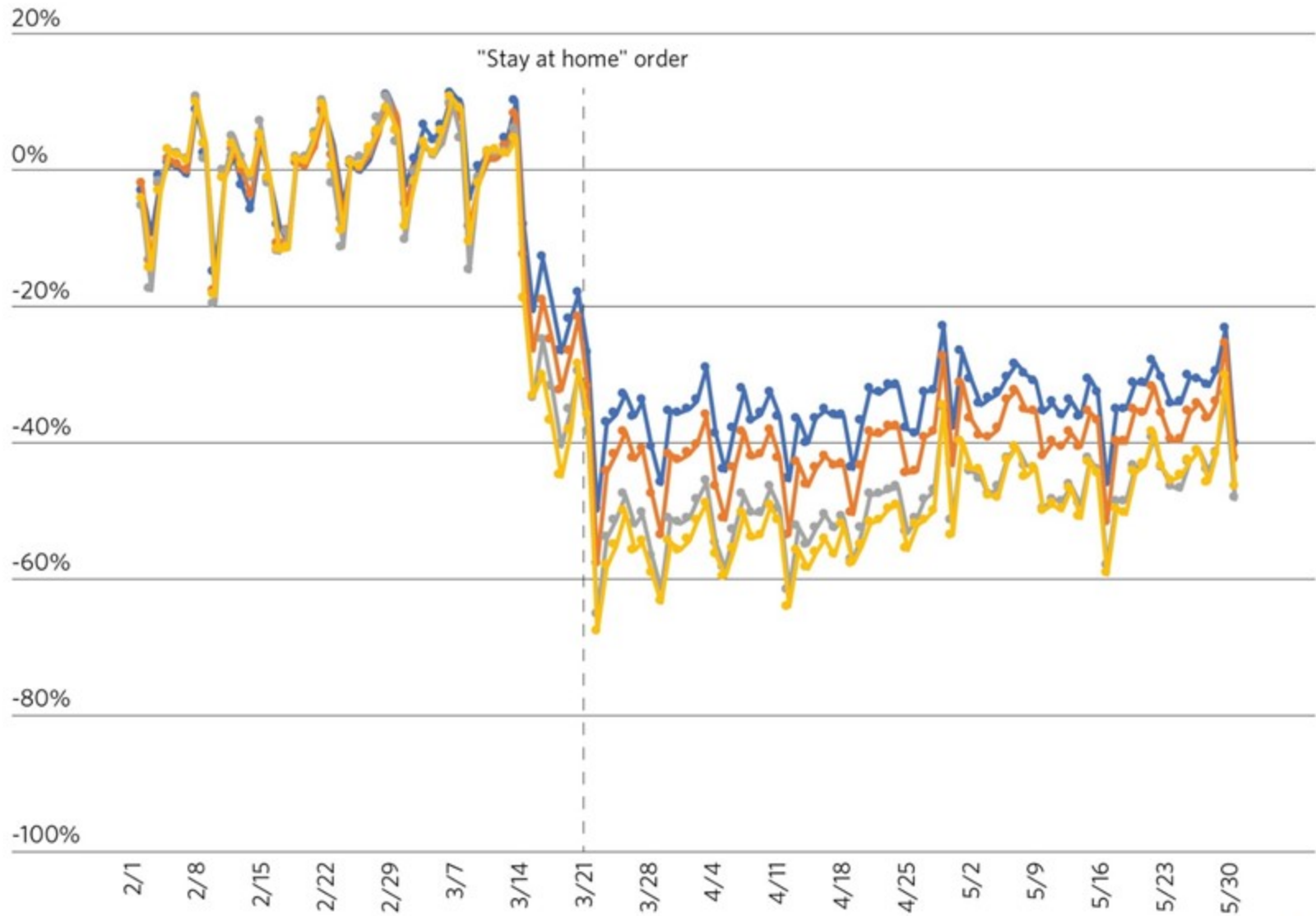
Erin Aleman
Executive Director
Chicago Metropolitan Agency for Planning (CMAP)



Change in trips compared to February 2020 daily average

Household income relative to the regional median

◆ 30% or more below
 ◆ 0-30% below
 ◆ 0-30% above
 ◆ 30% or more above



Note: Regional median household income is approximately \$70,500 and income is based on census tract median income for each trip origin.

Sources: Chicago Metropolitan Agency for Planning analysis of Replica State of Illinois COVID Planning data, 2020, made available by the Illinois Department of Transportation and American Community Survey data, five-year estimates, 2014-2018.





pace

BullsEye
HEALTHCARE

2
5
4
3

BullsEye

076-30782

Regional greenhouse gas emissions by source



Stationary energy



Waste



Transportation



**ROAD
CLOSED
DUE TO
FLOODING
LOCAL TRAFFIC
ONLY!**



Anthony Maietta

Life Scientist, Region 5 Office

U.S. EPA's Air and Radiation Division

EPA's Clean Diesel Programs



National Clean Diesel Campaign

<http://www.epa.gov/cleandiesel>

Midwest Clean Diesel Initiative

<http://www.epa.gov/midwestcleandiesel>

EPA Ports Initiative

<http://www.epa.gov/ports-initiative>

EPA's SmartWay Transport Partnership

<http://www.epa.gov/smartway>



Roberto Requejo

Project Director
Elevated Chicago



CONNECTING PEOPLE,
BUILDING EQUITY

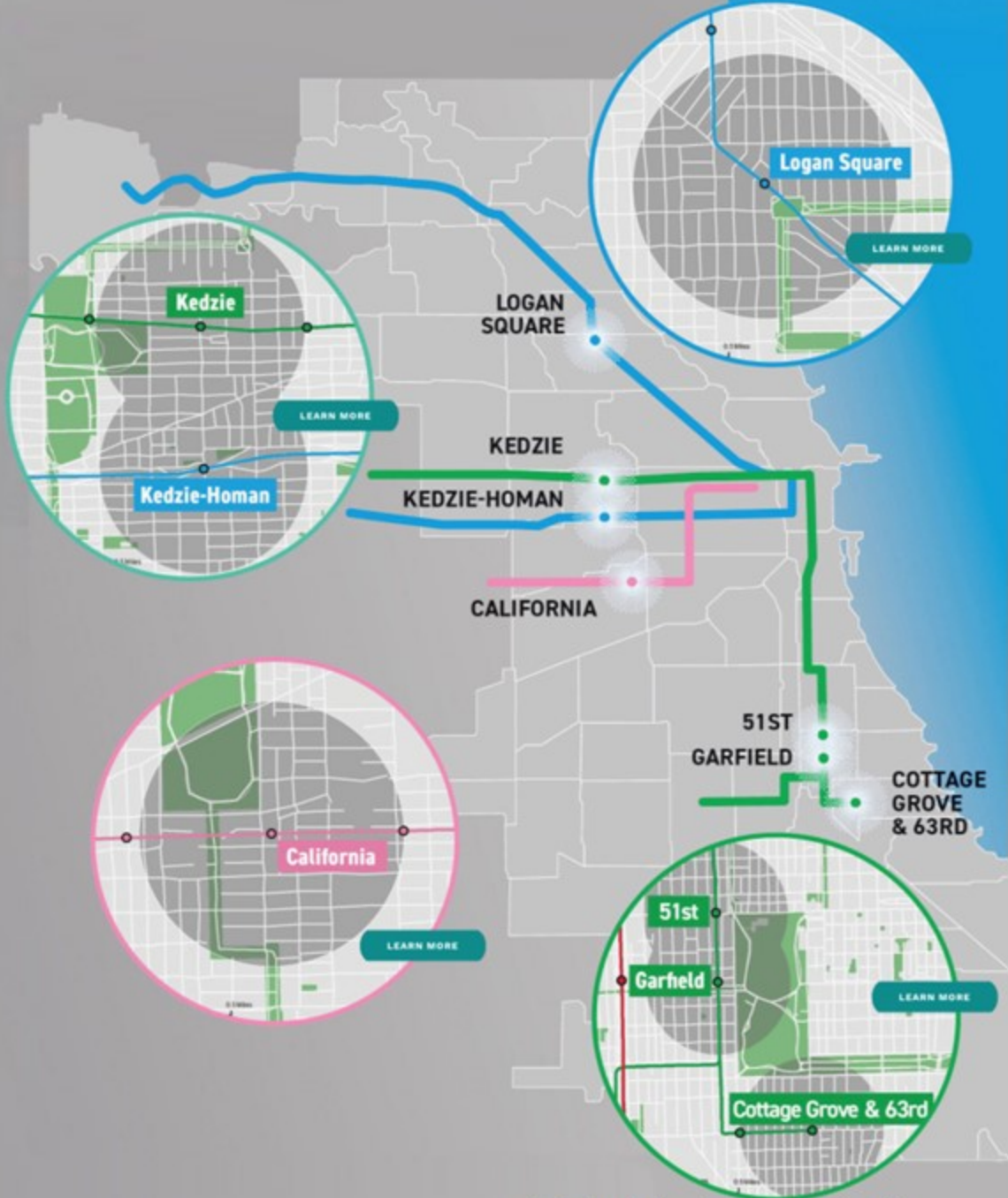
Elevated Chicago Introduction

Roberto Requejo, Program Director
@Splanish @elevated_chi

www.elevatedchicago.org

July 2020

Collaborating for equity

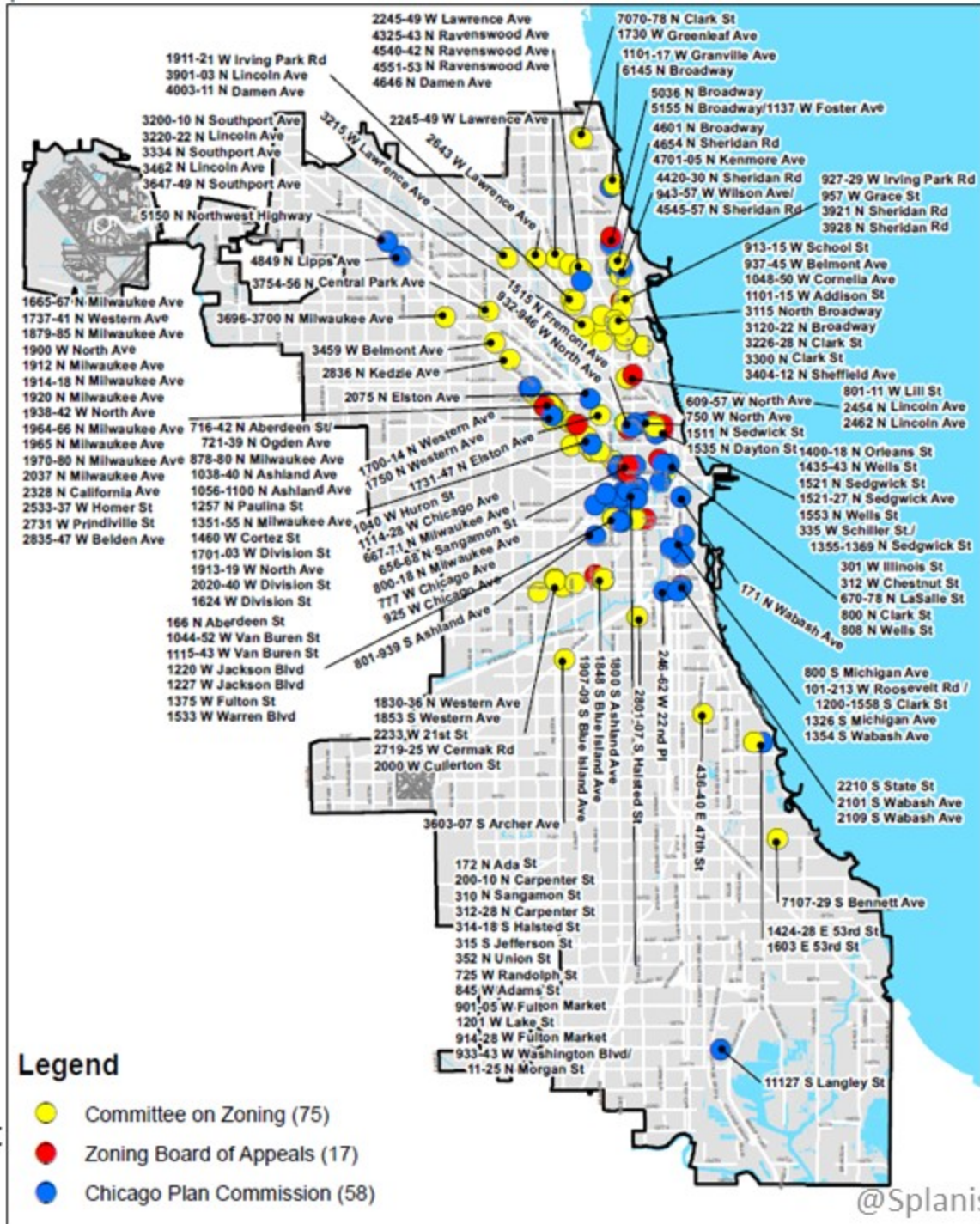


What is TOD



Source: www.itdp.org

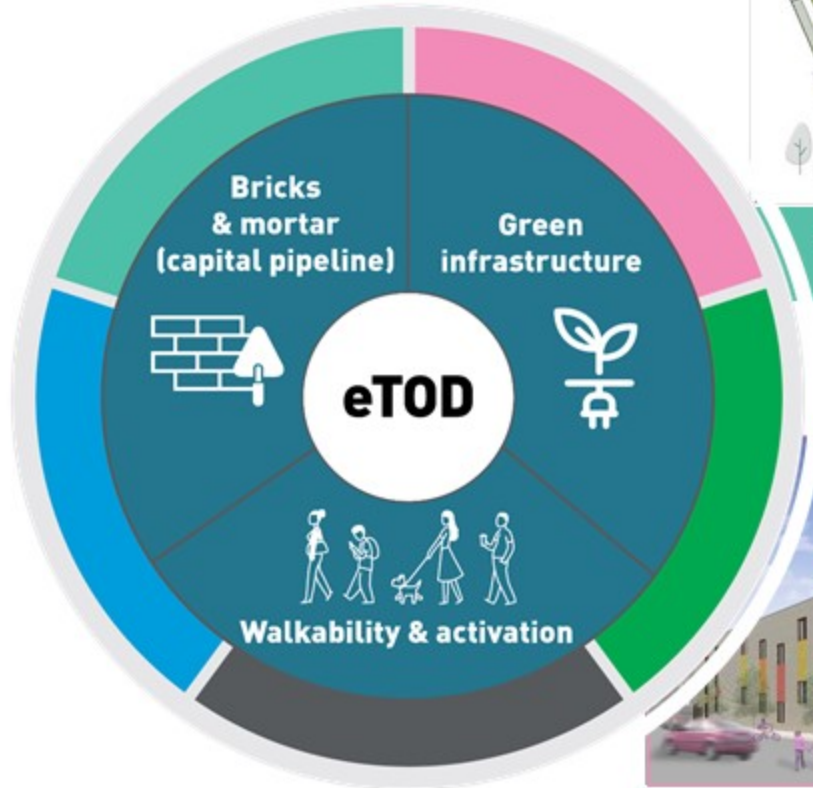
TODs in Chicago (2013-2019)



@Spanish @elevated_chi

Source: Chicago Dept. of Planning and Development

From TOD to eTOD



Eco-Orchard rendering (Kedzie Corridor eHub)



Emmett Street Apartments by Bickerdike rendering (Logan Square Blue Line eHub)



Latinos Progresando Center rendering (California Pink Line eHub)



Garfield Green by POAH rendering (Kedzie Corridor eHub)



Overton School by WPDG (Green Line South eHub)

Our systems change work

- Diversity, Equity & Inclusion cohort & learning
- eTOD policy plan
- Support for capital pipeline investments
- *Community Engagement Principles & Recommendations*
- **2020 eTOD Symposium on July 31, 1 p.m. CT**

Leadership diversity in development & transportation, Chicago region

Key Fields	Total number		Percentage	
	White	People of Color	White	People of Color
Real Estate	1,061	80	93%	7%
Construction	826	43	95%	5%
Transportation	631	85	88%	12%

*CEOs and leaders reporting to CEOs (C-suite)

Source: U.S. Equal Employment Opportunity Commission (2015 data)

Questions & Answers

THANKS FOR
LISTENING



LOYOLA
UNIVERSITY CHICAGO

From the Chat session

- Roberto shared the link to the 1966 Comprehensive Plan of Chicago: <https://app.box.com/s/aifmlltmoj2peyvtmrmruday79o9uhv52>
- Learn more about the CUE example Roberto mentioned here: <https://www.chicagounitedforequity.org/logan-cdot>
- Are there any plans or resources to look at for transportation that includes the larger Chicago area/Suburbs?
 - Erin Aleman: CMAP's plan covers the 7 county northeastern Illinois area: <https://www.cmap.illinois.gov/2050/>
- Roberto Requejo (he/his), Elevated Chicago: Some ideas for better community engagement here: <http://www.elevatedchicago.org/cep/>
- Susan Mudd: IL got \$109 mi from VW mitigation trust which, as Tony mentions, IEPA manages. IEPA has a plan (which can be changed) and has so far spent only 20 mi of the funds. IEPA allocated 10% of the funds for EV infrastructure, (Trust allows up to 15% for EV infrastructure) but state capital bill last year also appropriated \$70 for EV infrastructure, none of which has been spent to date.
 - Aaron Durnbaugh: Thanks Susan, These are great comments on the VW settlement. Everyone should visit the Environmental Law and Policy Center's site to learn more: <http://elpc.org/tag/vw-settlement/>
- Susan Mudd: CTA has a couple of EV transit buses, more on the way. Need support to achieve the promise made by City council and mayor to convert entire 1800 bus fleet to electric by 2040. We believe neighborhoods with worst air quality should get early on.