

ITS Executive Steering Committee (ITESC)

Agenda and Materials
October 7, 2010



Preparing people to lead extraordinary lives

Agenda

- Global Initiatives Task Force
 - C. Scheidenhelm
- Technology Fee Overview
 - S. Malisch, A. Prokic-Kostic
- Enterprise Architecture / Architecture Review Board
 - J. Sibenaller
- Research Data Center
 - D. Vonder Heide
- Functional Meetings
 - S. Malisch



Agenda

- Global Initiatives Task Force
 - C. Scheidenhelm
- Technology Fee Overview
 - S. Malisch, A. Prokic-Kostic
- Enterprise Architecture / Architecture Review Board
 - J. Sibenaller
- Research Data Center
 - D. Vonder Heide
- Functional Meetings
 - S. Malisch



Online Course Initiative: Summer 2011

- **Goal 1:** to provide online summer opportunities for courses frequently taken elsewhere by Loyola students.
- **Goal 2:** to prepare faculty teaching these courses to envision, develop and deliver quality courses.
- **Goal 3:** to build a cohort of online faculty who can function as mentors for colleagues.
- **Goal 4:** to develop a collection of quality, online courses that can be taught by other LUC faculty.



Process

- Develop and teach 5, 2-hour workshops
- Create online readiness materials for students
- Design and deliver a technology infrastructure for Adobe Connect (synchronous delivery medium)
- Create “Online Initiatives” website, with FAQs and resources.
- Develop an assessment program for the components of the initiative



Timeline

Summer 2011 Cohort

Mentor
colleagues →

Teaching online courses →

Develop online course content; participate in online community →

Hands-on technology and pedagogy training →

Sep Oct Nov Dec Jan Feb Mar Apr May June July Aug 2011



Preparing people to lead extraordinary lives

Agenda

- Global Initiatives Task Force
 - C. Scheidenhelm
- **Technology Fee Overview**
 - S. Malisch, A. Prokic-Kostic
- Enterprise Architecture / Architecture Review Board
 - J. Sibenaller
- Research Data Center
 - D. Vonder Heide
- Functional Meetings
 - S. Malisch



FY10 Technology Fee Summary

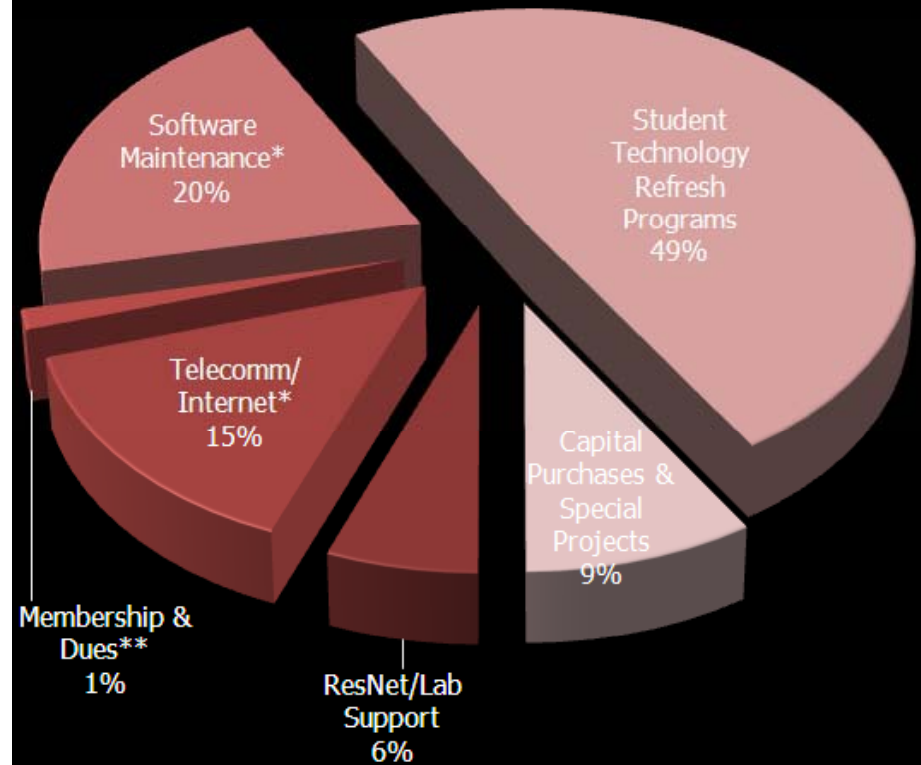
	FY10 Projected	FY10 Actual
Revenue	\$2,170,000	\$2,700,000
Spend	\$1,885,000	\$1,690,000
Carryforward	\$285,000	\$1,010,000

FY10 Technology Fee Breakdown	Amount	% of Total
ResNet/Lab Support	\$100,000	6%
Telecomm/Internet*	\$245,000	14%
Membership & Dues**	\$23,000	1%
Software Maintenance*	\$340,000	20%
Student Technology Refresh Programs	\$830,000	49%
Capital Purchases & Special Projects	\$152,000	9%
FY10 Total Spend	\$1,690,000	100%
FY10 Carryforward	\$1,010,000	
FY10 Total	\$2,700,000	

* Denotes Item Formerly Covered by Resnet Budget

** Denotes New Item Formerly Covered by Facilities

FY10 Summary



Criteria Used to Determine Tech. Fee Expense

Service/Support/Learning for Students

Description	Percentage
None	0%
Partial	25%
Shared	50%
Substantial/ Primary	75%
Complete/Full	100%



Preparing people to lead extraordinary lives

Technology Fee Category Definitions

- Service: Recognizable by students as a service offering
i.e. Internet/Password Management/E-mail/ResNet
- Support: Required to provide a student service or meet institutional requirements
i.e. Network Connectivity/Device Encryption/Servers/Storage
- Learning: Directly related to classroom activity or academic record
i.e. Student Information System/Learning Mgmt. System
(grades/classes/schedules/e-portfolios)

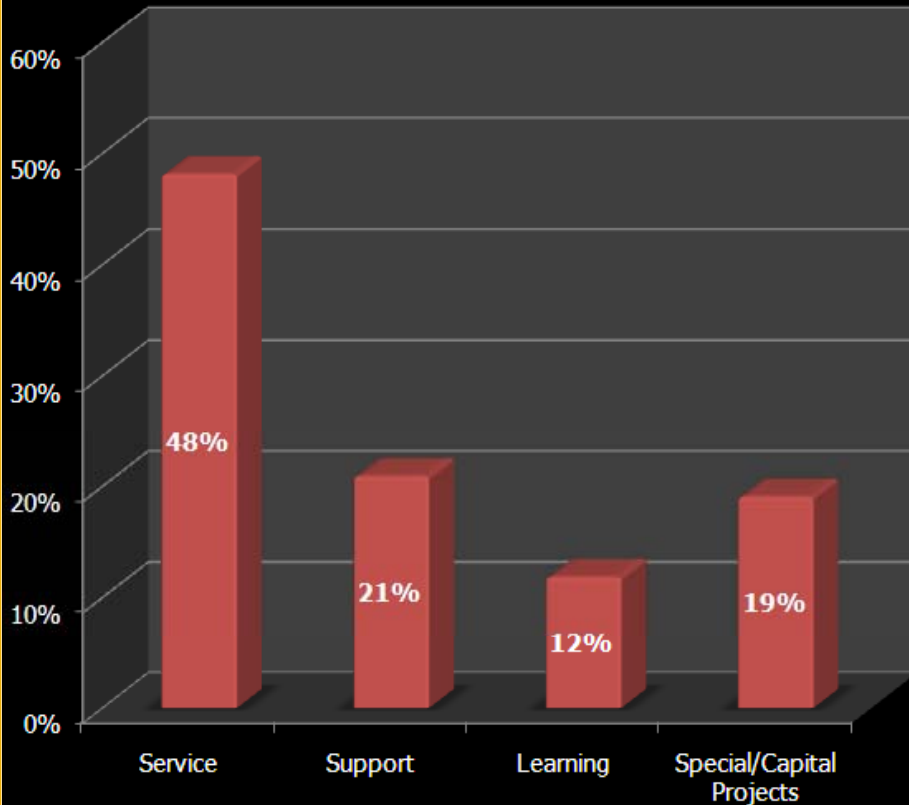


FY11 Projected Tech. Fee Category Breakdown

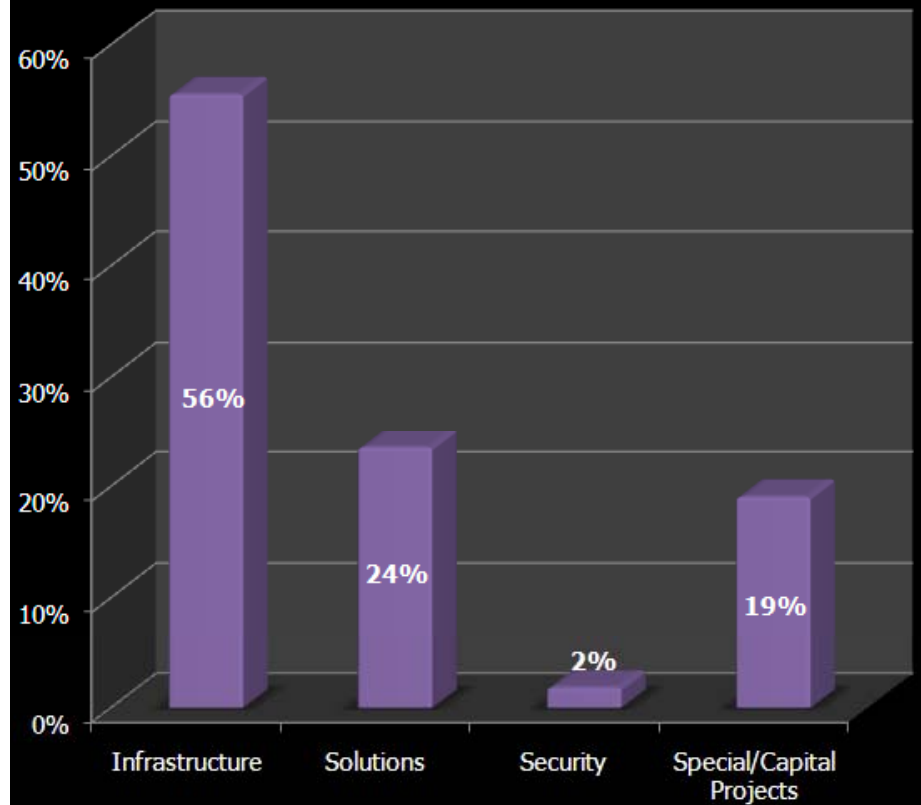
Student Category	Amount	% of Total
Service	\$1,300,000	48%
Support	\$565,000	21%
Learning	\$320,000	12%
Special/Capital Projects	\$515,000	19%
	\$2,700,000	100%

Technology Subcategory	Amount	% of Total
Infrastructure	\$1,500,000	56%
Solutions	\$635,000	24%
Security	\$50,000	2%
Special/Capital Projects	\$515,000	19%
	\$2,700,000	100%

FY11 by Student Category



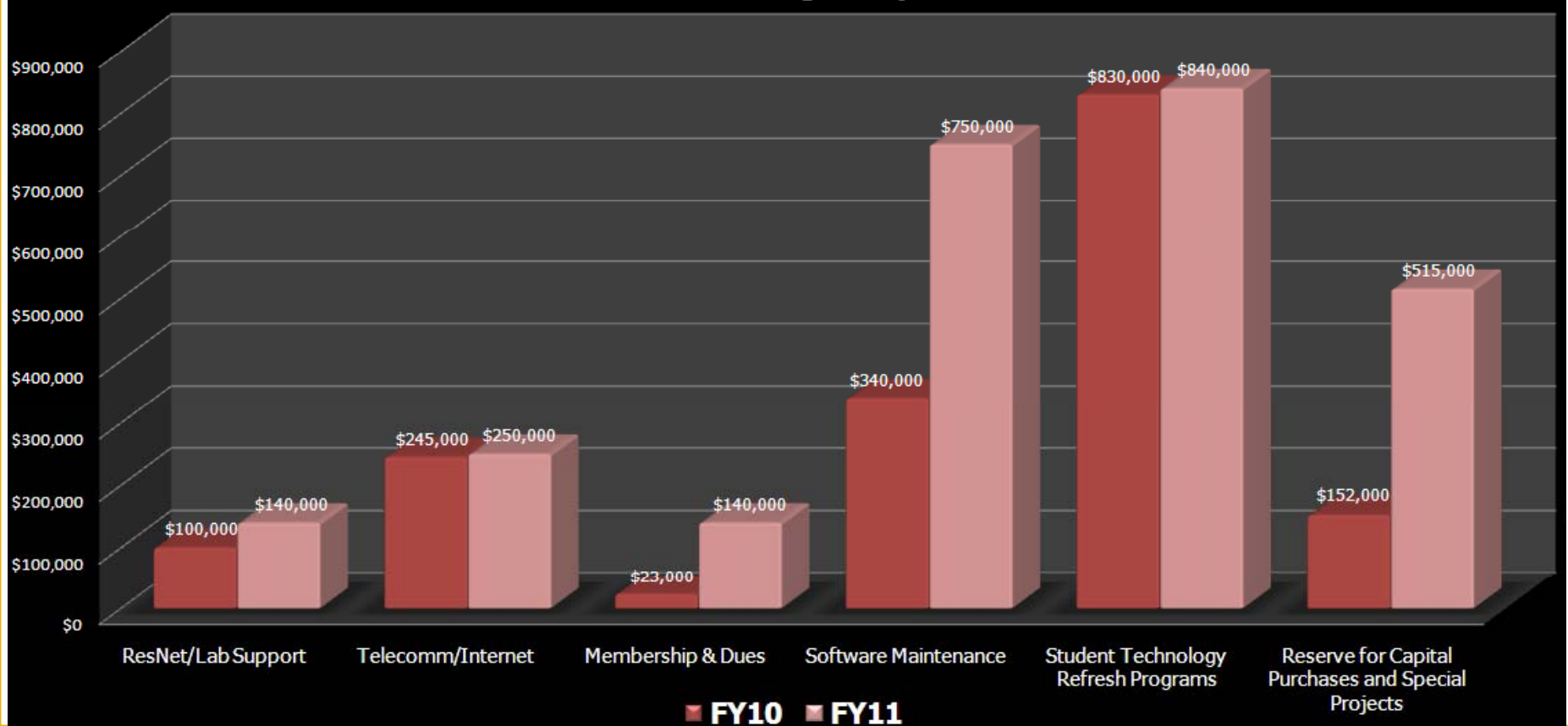
FY11 by Technology Subcategory



FY10 v. Projected FY11 Budget Comparison

Technology Fee Breakdown	FY10	% of Total	FY11	% of Total
ResNet/Lab Support	\$100,000	6%	\$140,000	5%
Telecomm/Internet	\$245,000	14%	\$250,000	9%
Membership & Dues	\$23,000	1%	\$140,000	5%
Software Maintenance	\$340,000	20%	\$750,000	28%
Student Technology Refresh Programs	\$830,000	49%	\$840,000	32%
Reserve for Capital Purchases and Special Projects	\$152,000	9%	\$515,000	20%
Total Spend	\$1,690,000	100%	\$2,635,000	100%
Carryforward	\$1,010,000		\$65,000	
Revenue Collected	\$2,700,000		\$2,700,000	

FY10 v. FY11 Budget Projections



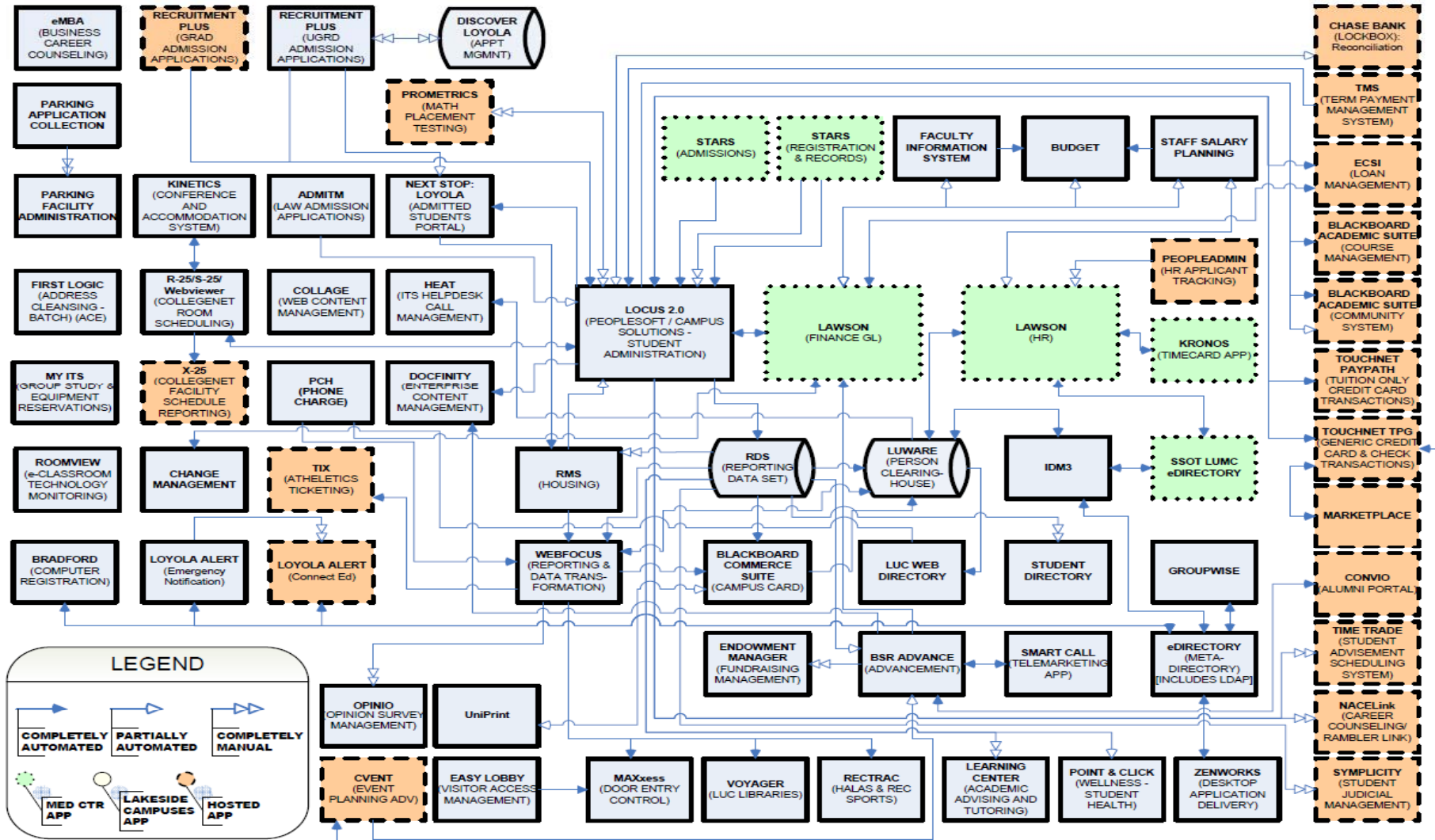
Agenda

- Global Initiatives Task Force
 - C. Scheidenhelm
- Technology Fee Overview
 - S. Malisch, A. Prokic-Kostic
- Enterprise Architecture / Architecture Review Board
 - J. Sibenaller
- Research Data Center
 - D. Vonder Heide
- Functional Meetings
 - S. Malisch



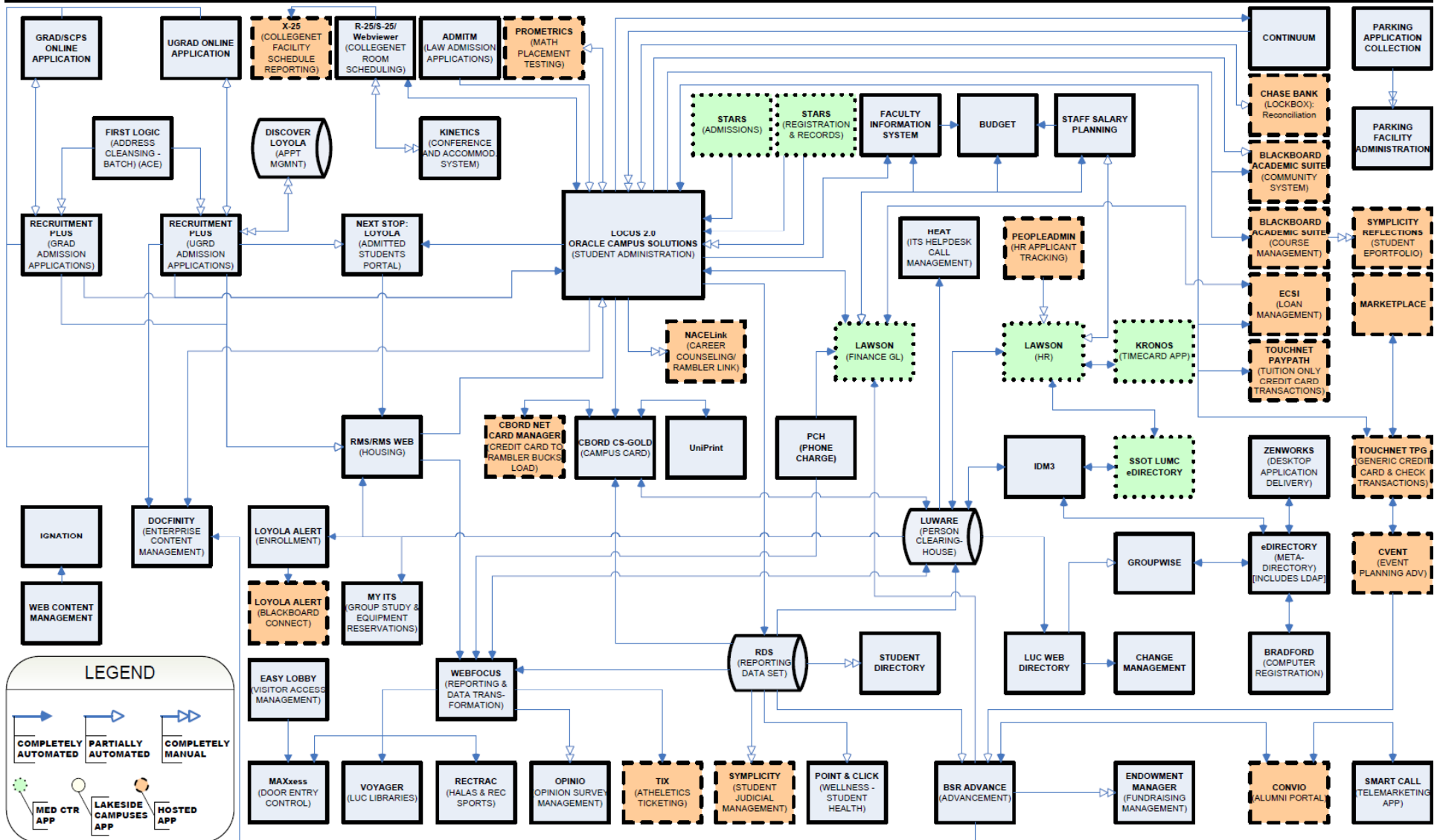
Current State Diagram

Loyola Enterprise Application Data Relationships – 08/01/2009



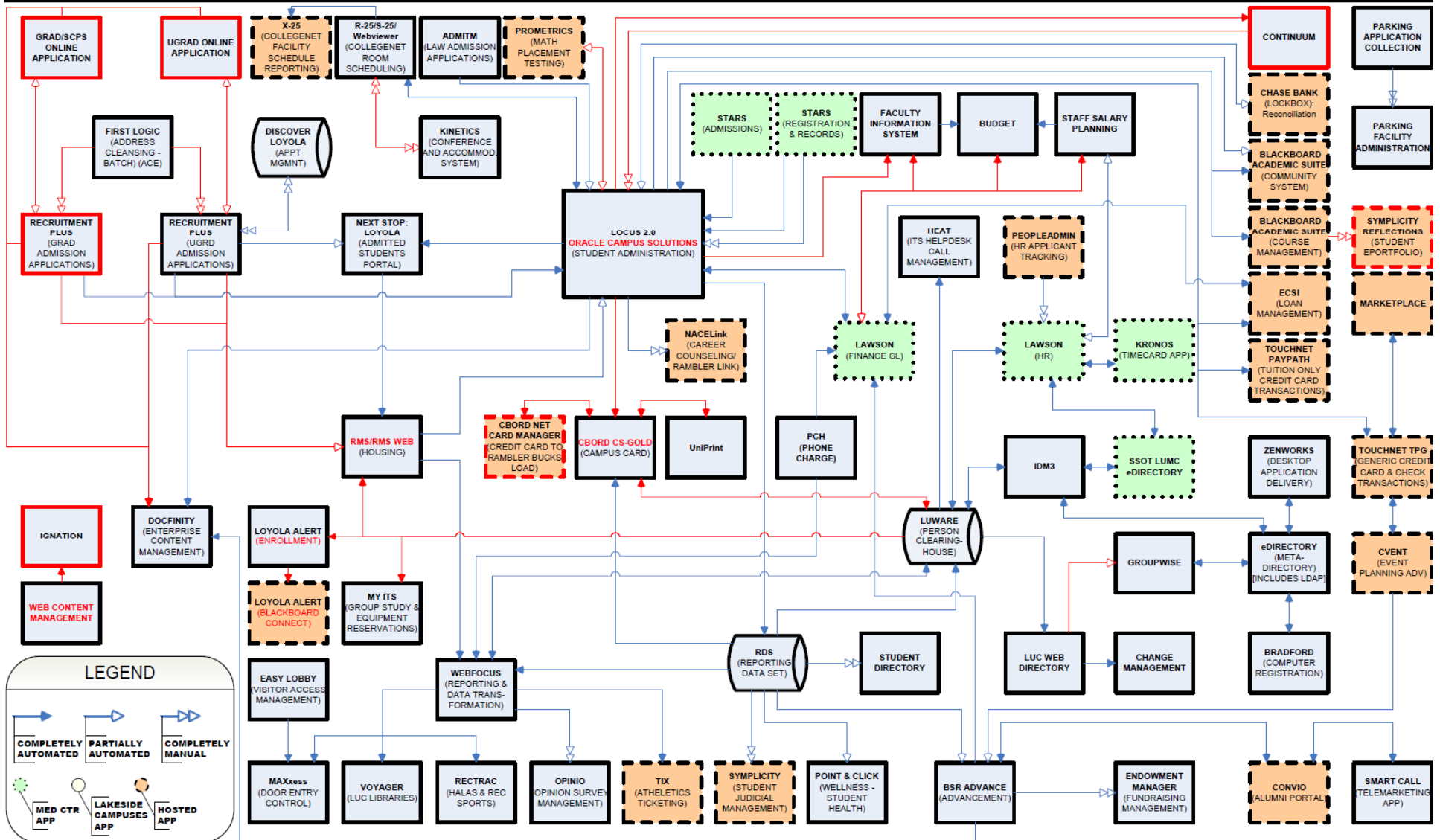
Current State Diagram - Revised

Loyola Enterprise Application Data Relationships – 08/01/2010



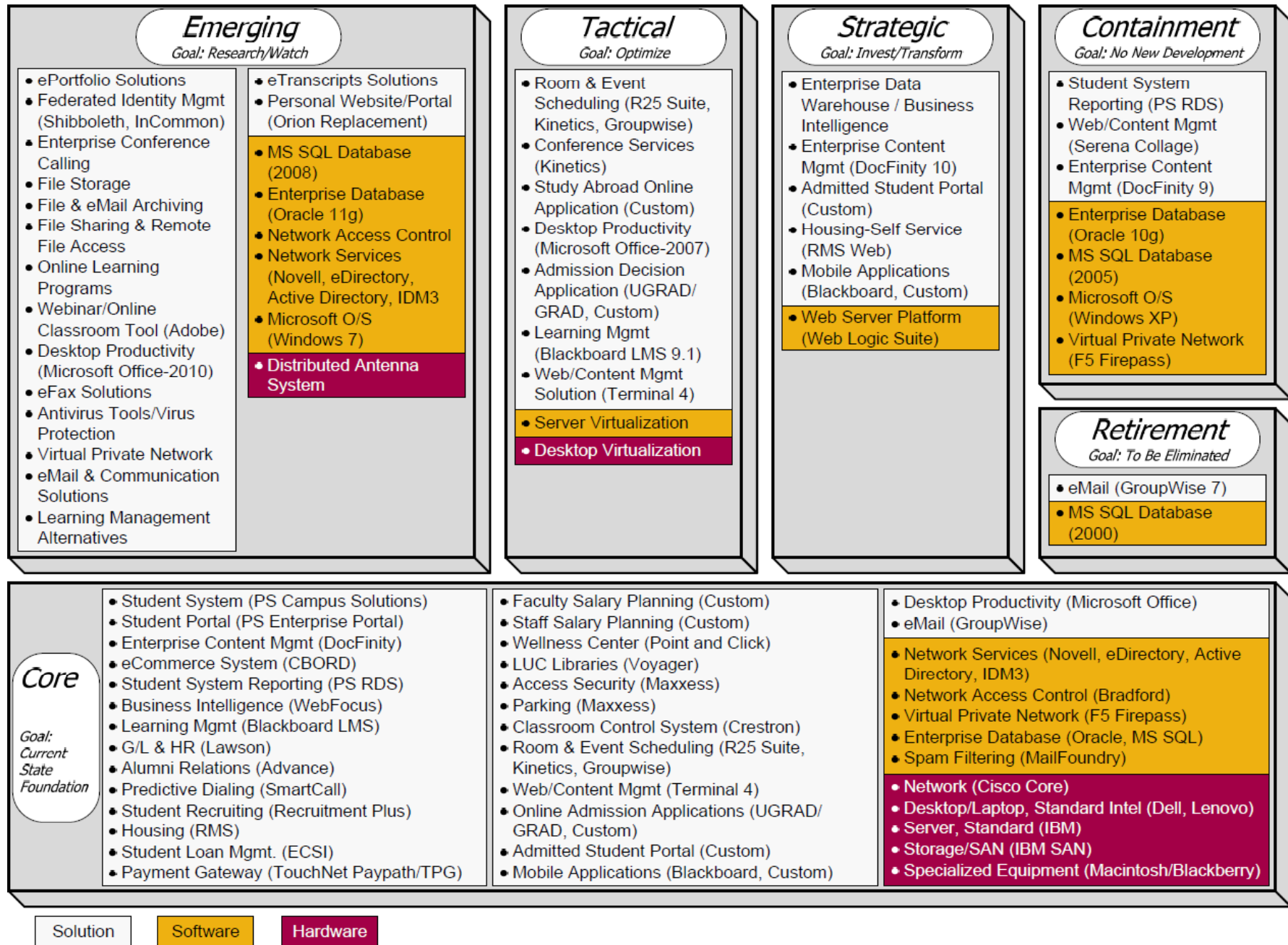
Current State Diagram – Changes

Loyola Enterprise Application Data Relationships – 08/01/2010



LUC Technology Strategy - A Roadmap for Change

September 13, 2010



Solution Software Hardware

TAC List

Item	Level	Layer	TAC Owner	ARB Sponsor	Status	Start Date	ARB Presentation Date
On-Line Learning Programs	Road-Map	Solution	Carol Scheidenhelm	Bruce Montes	Active	07/2010	09/2010
MS SQL Database (2008)	Road-Map	Software	Charlotte Pullen	Kevin Smith	Active	2009	10/2010
Enterprise Conference Calling	Road-Map	Solution	Dave Gabrovich	Dan Vonder Heide	Active	2009	11/2010
File Sharing & Remote File Access	Road-Map	Solution	Jeff Apa	Dan Vonder Heide	Active	2009	11/2010
Enterprise Database (Oracle 11g)	Road-Map	Software	Charlotte Pullen	Kevin Smith	Active	2009	11/2010
Desktop Productivity (Microsoft Office-2010)	Road-Map	Solution	Kathy Ryan	Dan Vonder Heide	Active	2010	11/2010
Microsoft O/S (Windows 7)	Road-Map	Software	Kathy Ryan	Dan Vonder Heide	Active	2010	11/2010
Anti-Virus Tools/Virus Protection	Road-Map	Software	Kathy Ryan	Dan Vonder Heide	Active	2010	11/2010
Network Services (Novell, eDirectory, IDM3)	Road-Map	Software	Jeff Apa	Dan Vonder Heide	Active	03/2010	11/2010
Personal Account Manager/Password Mgmt	Inventory	Solution	Alison Stillwell	Bruce Montes	Active	03/2010	01/2011
ePortfolio Solutions	Road-Map	Solution	Patrick Green	Jim Sibenaller	Active	08/2009	04/2011
Webinar/Online Classroom Tool (Adobe)	Road-Map	Solution	Bruce Montes	Bruce Montes	Active	12/2009	06/2011
File Storage	Road-Map	Solution	Jeff Apa	Dan Vonder Heide	Active	2009	Q4 2010
Desktop Virtualization	Road-Map	Hardware	Kathy Ryan	Dan Vonder Heide	Active	03/2010	Q4 2010
eTranscripts	Road-Map	Solution	Eric Pittenger	Kevin Smith	Active	03/2010	Q4 2010
File & eMail Archiving	Road-Map	Solution	Jeff Apa	Dan Vonder Heide	Active	2009	Q1 2011
Distributed Antenna System	Road-Map	Hardware	Bob Heeseman	Dan Vonder Heide	Active	2009	Q1 2011
Learning Mgmt Alternatives	Road-Map	Solution	Carol Scheidenhelm	Bruce Montes	Active	06/2010	Q2 2011
Network Access Control	Road-Map	Software	Dave Wiczorek	Dan Vonder Heide	Active	03/2010	TBD
Personal Website Replacement (Orion)	Road-Map	Solution	Jeff Apa	Dan Vonder Heide	Active	09/2010	TBD
eMail & Communication Solutions	Road-Map	Solution	Dan Vonder Heide	Dan Vonder Heide	Hold	2009	TBD
eFax Solutions	Road-Map	Solution	Jim Sibenaller	Jim Sibenaller	New	TBD	TBD
Virtual Private Network / Secure Portal	Road-Map	Software	Dan Vonder Heide	Dan Vonder Heide	New	TBD	TBD
Student Recruiting (Recruitment Plus)	Road-Map	Solution	Paul Roberts	Kevin Smith	New	TBD	TBD

Agenda

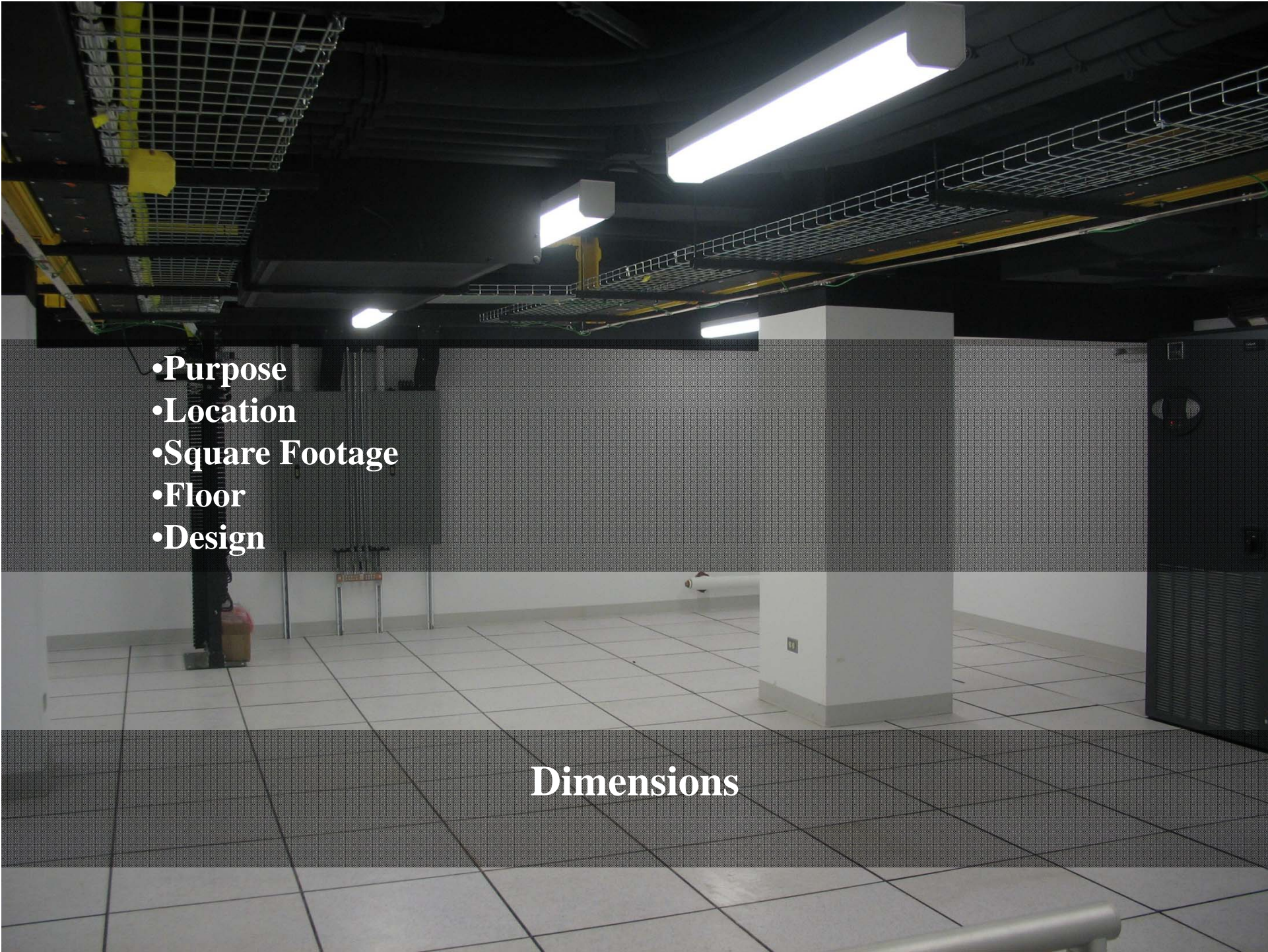
- Global Initiatives Task Force
 - C. Scheidenhelm
- Technology Fee Overview
 - S. Malisch, A. Prokic-Kostic
- Enterprise Architecture / Architecture Review Board
 - J. Sibenaller
- **Research Data Center**
 - D. Vonder Heide
- Functional Meetings
 - S. Malisch



- 
- **Virtual Tour**
 - **Governance**
 - **Short Term Planning**
 - **Long Term Planning**

Loyola University Research Data Center



- 
- **Purpose**
 - **Location**
 - **Square Footage**
 - **Floor**
 - **Design**


Dimensions

- 
- A photograph of a server room. The ceiling is dark with several long, yellow overhead HVAC units mounted on it. Below the ceiling, there are metal grates and fluorescent light fixtures. In the background, there are white walls, a door, and a tiled floor. On the right side, there are server racks with various components. The overall scene is a typical data center environment.
- 5 and 8 Ton HVAC Units
 - Third to Half Cooling Capacity
 - Monitoring


Cooling



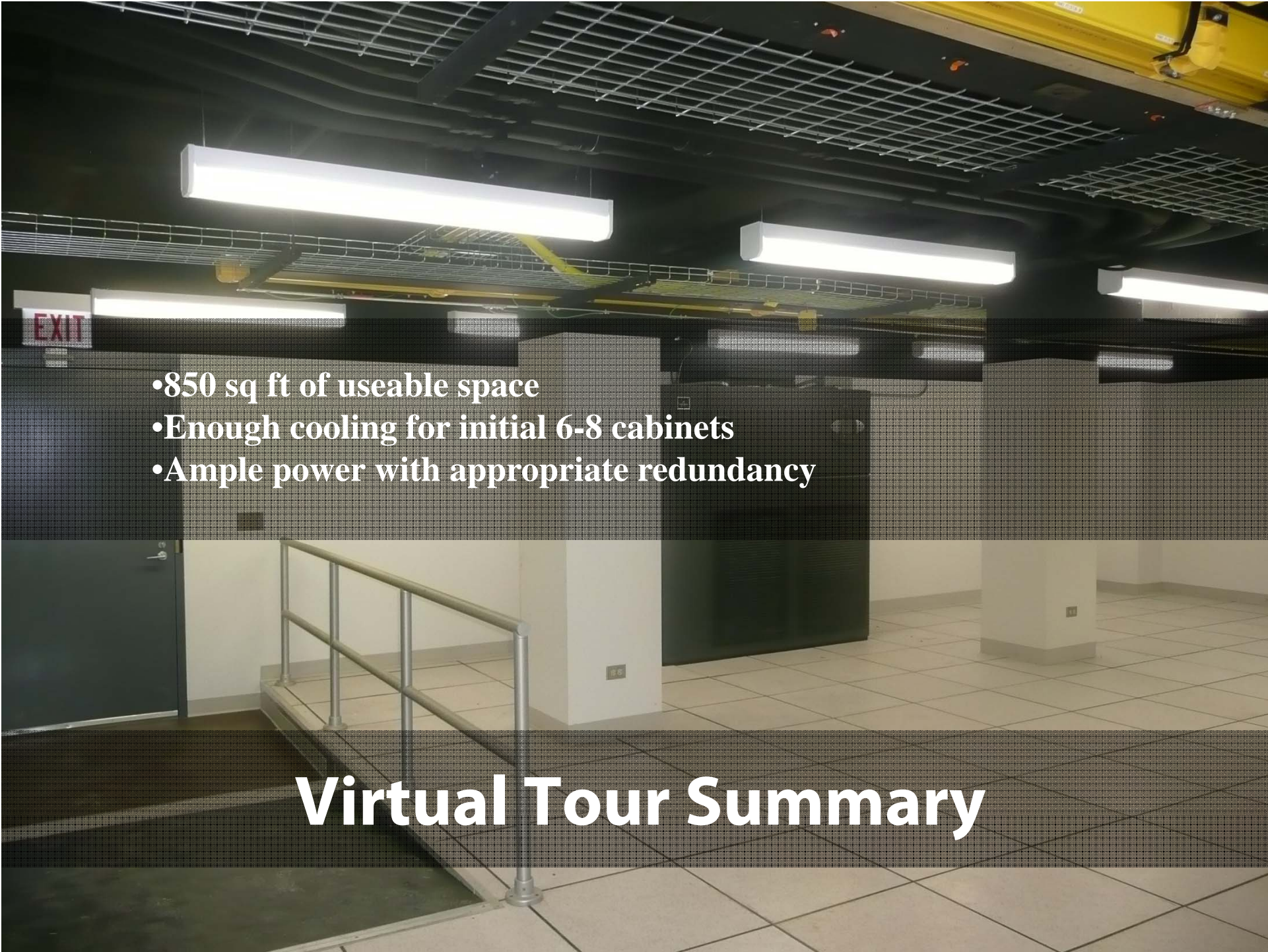
Cooling Chillers

- 
- **Low Voltage**
 - **Fiber**
 - **Network Connectivity**
 - **Power**

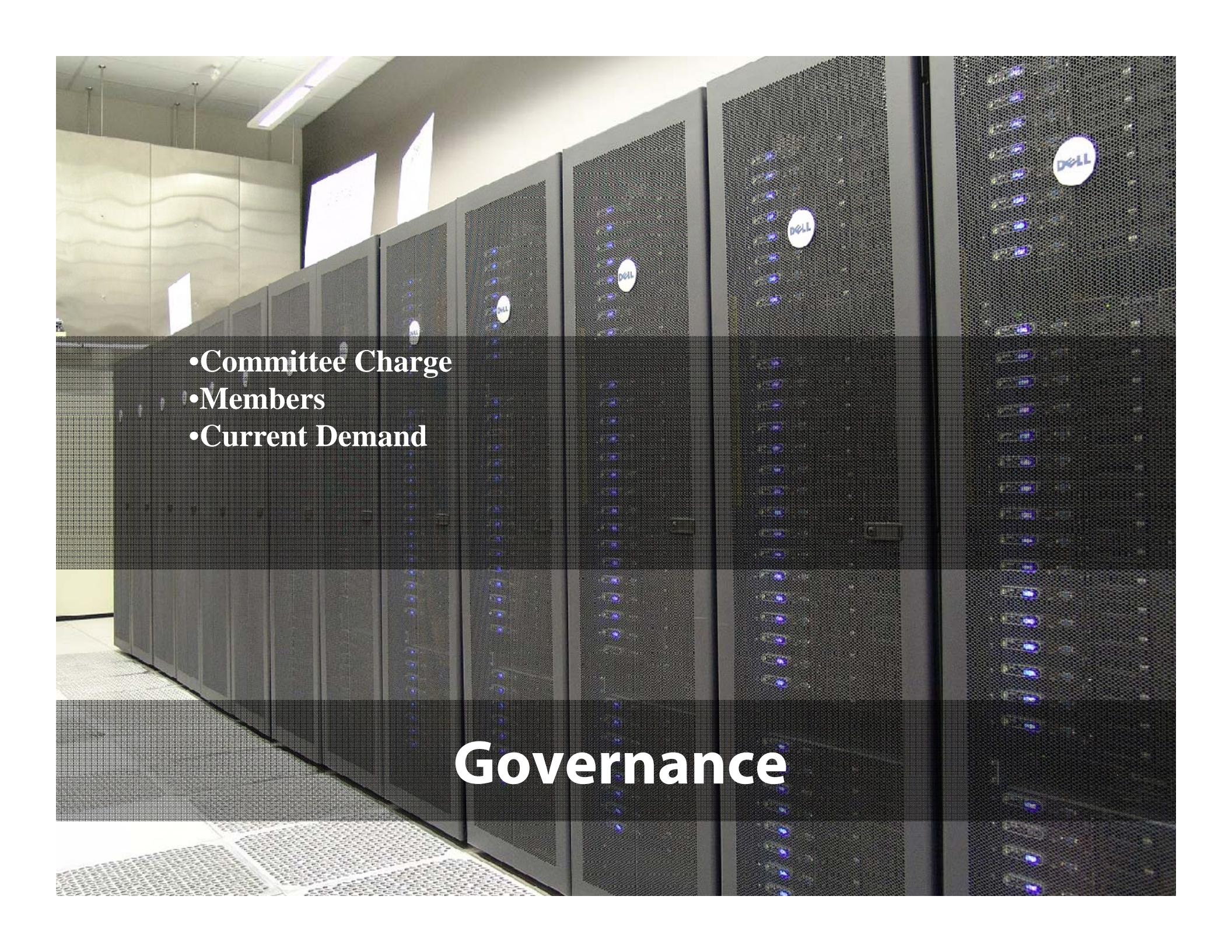
Cable Management

- 
- Single ComEd Feed
 - 50KVA UPS
 - Generator
 - 110/220 Outlets

Power

- 
- 850 sq ft of useable space
 - Enough cooling for initial 6-8 cabinets
 - Ample power with appropriate redundancy


Virtual Tour Summary

- 
- Committee Charge
 - Members
 - Current Demand

Governance

- 
- **Committee Charge**
 - **Limited and Expensive Resource**
 - **Process for Usage, Sustainability and Retirement**
 - **Members**
 - **Current Demand**

Governance

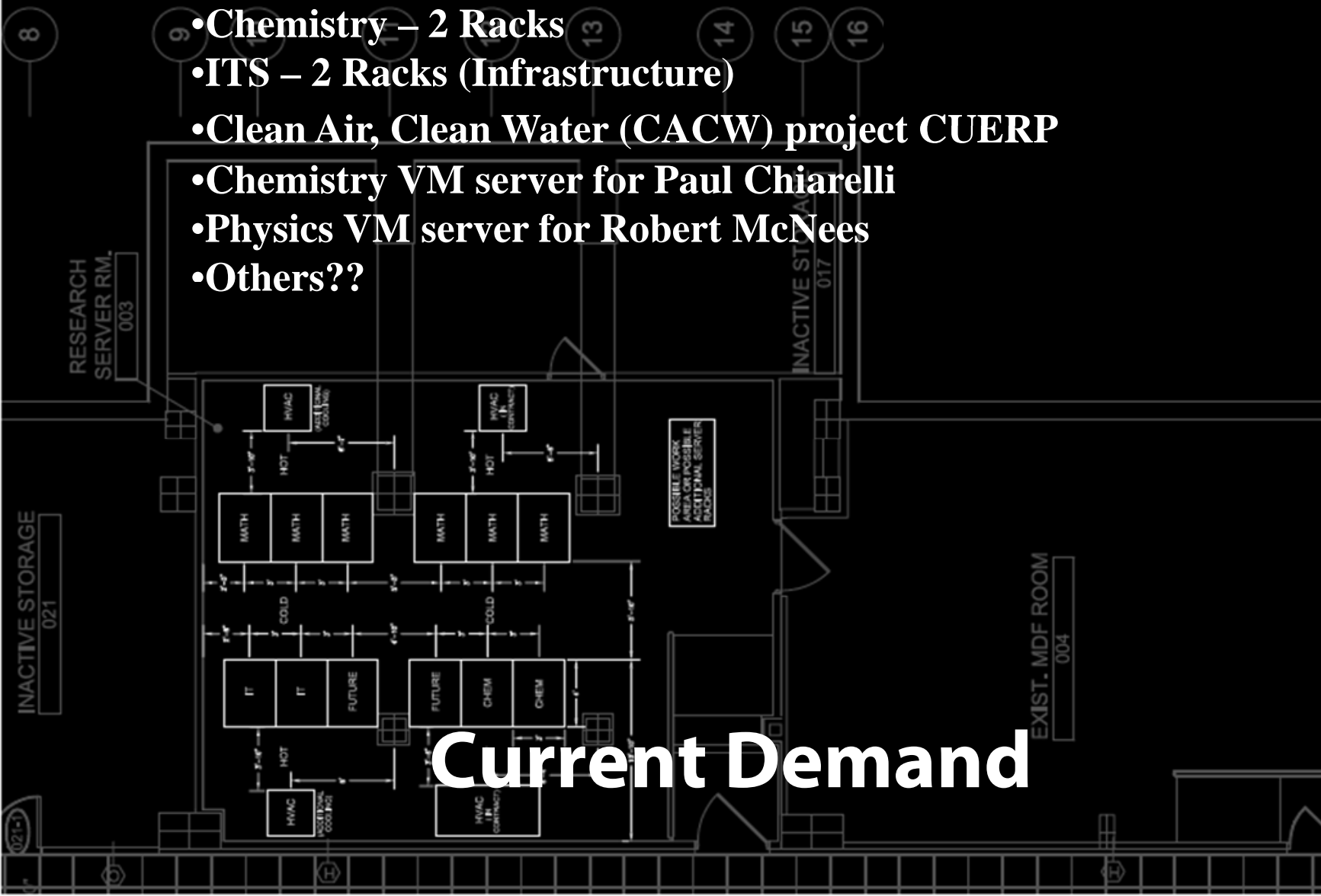


**Samuel A. Attoh, Dean of the Grad. School & Assoc. Provost for Res.,
Chair**
Fred Bryant, Psychology
Richard Holz, Chemistry
Susan Malisch, ITS
Tim O'Brien, Math & Statistics
Christine Putonti, Biology
Donna Quirk, SPA
Bill Sellers, Research
George Thiruvakuthal, Computer Science
Dan Vonder Heide, ITS

Committee Members



- Computer Science – 6 Racks
- Chemistry – 2 Racks
- ITS – 2 Racks (Infrastructure)
- Clean Air, Clean Water (CACW) project CUERP
- Chemistry VM server for Paul Chiarelli
- Physics VM server for Robert McNeas
- Others??



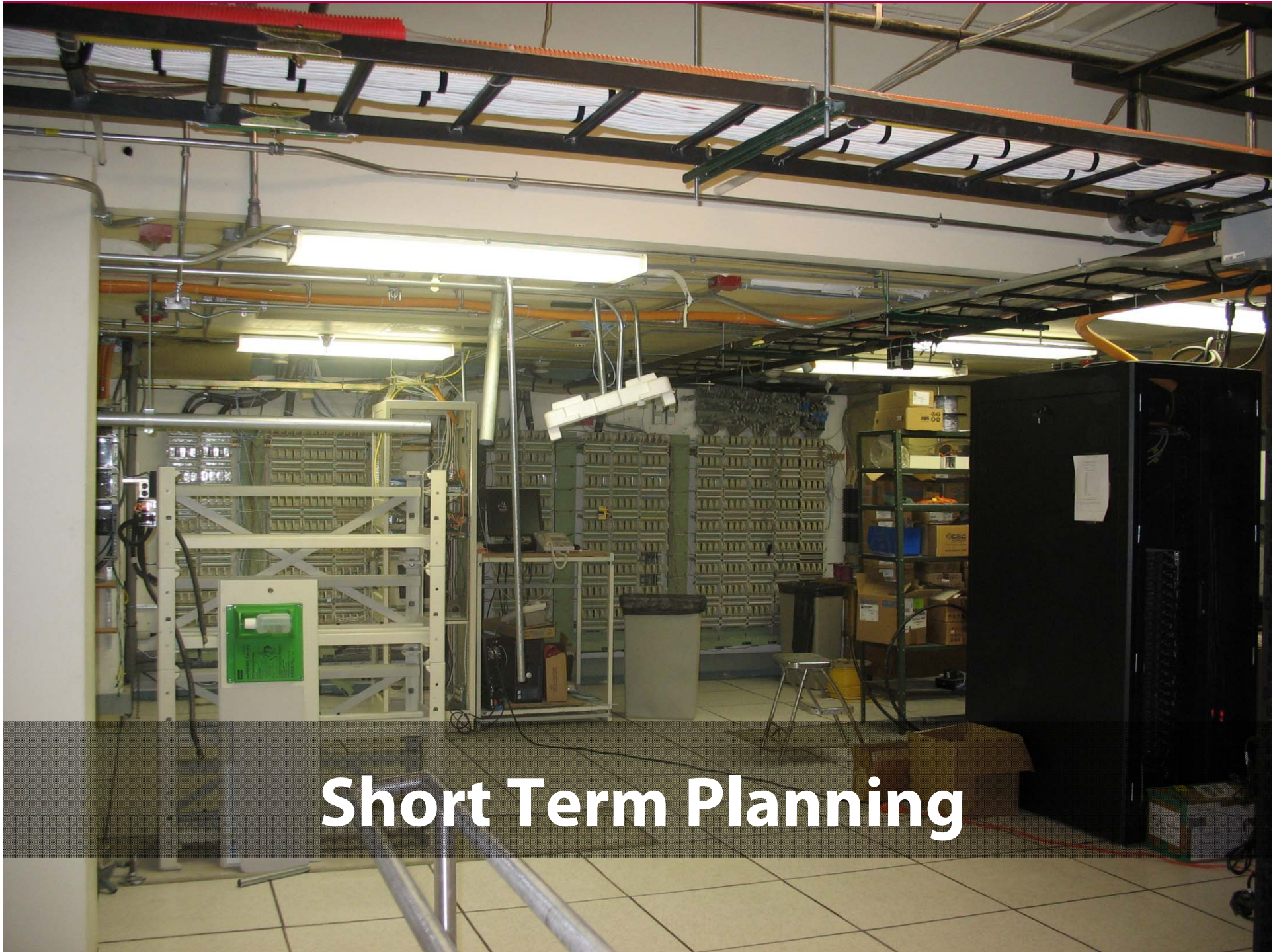
REVISIONS	
NO.	DESCRIPTION
1	ISSUED FOR PERMITS

PROJECT TITLE:
MUNDELEIN CENTER

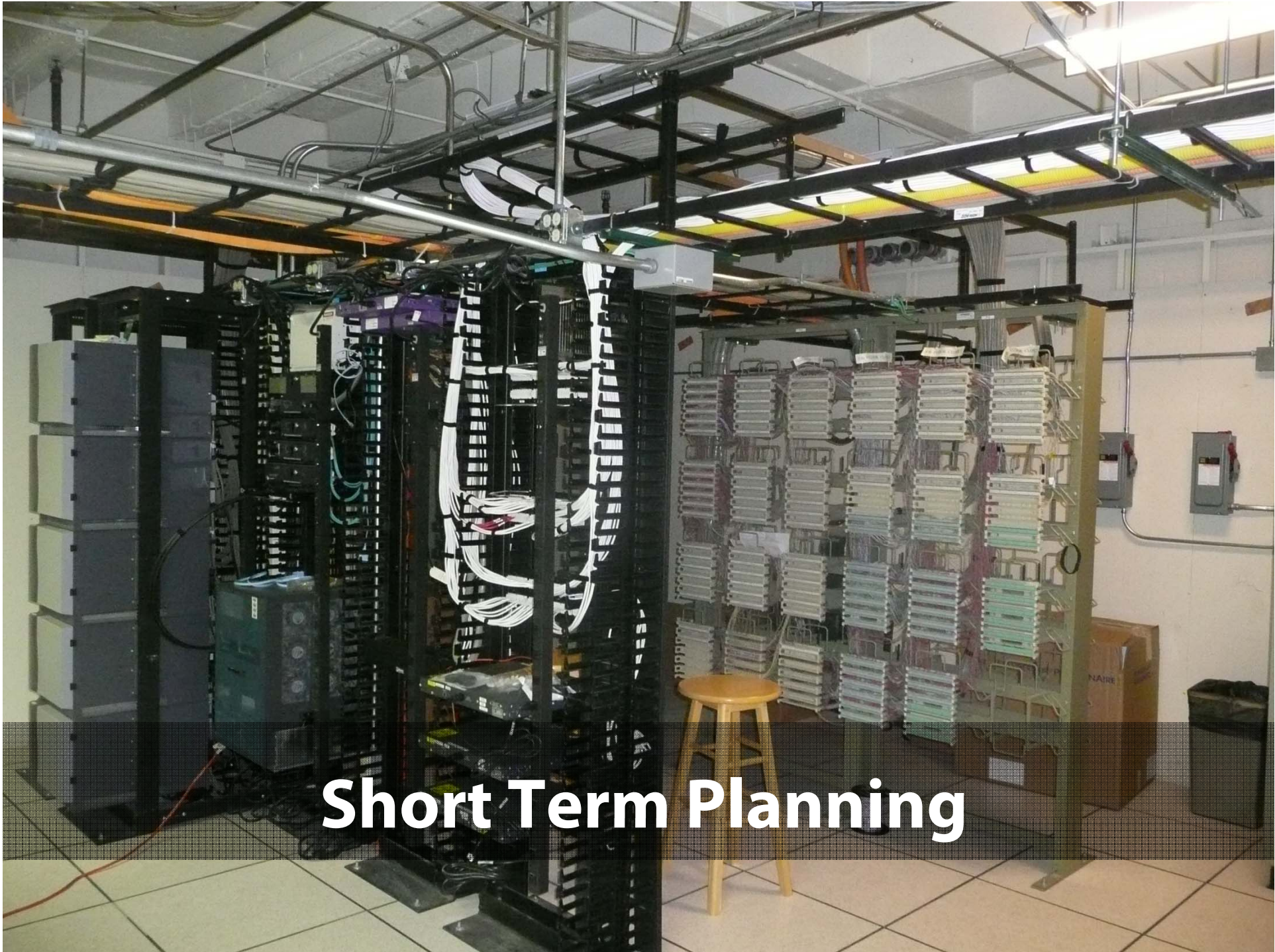
DRAWING TITLE:
RESEARCH SERVER ROOM
CURRENT SERVER RACKS

DESIGNED BY: RB
 DRAWN BY: BT
 CHECKED BY: CL
 DATE: 01/07/10
 PROJECT NO: 09004
 SCALE: 1/8" = 1'-0"

SHEET NO:
SK-3



Short Term Planning



Short Term Planning

- 
- A photograph of a server room with blue lighting. Several server racks are visible, some with glass doors showing internal components. The floor has a grid pattern. The overall atmosphere is futuristic and high-tech.
- HPC / Cluster
 - Virtualized Server Environment
 - Fewer Silos

Long Term Planning

Agenda

- Global Initiatives Task Force
 - C. Scheidenhelm
- Technology Fee Overview
 - S. Malisch, A. Prokic-Kostic
- Enterprise Architecture / Architecture Review Board
 - J. Sibenaller
- Research Data Center
 - D. Vonder Heide
- **Functional Meetings**
 - S. Malisch



FY11-FY12 ITESC Schedule

- August 26, 2010 - Thursday, 1:30-3:30 PM
 - DW/BI Program Vendor Recommendation
 - ISAC Information Program Recommendation
 - ATC Subcommittee FY11 Agenda
 - Research Data Center
- October 7, 2010 - Thursday, 1:30-3:30 PM
 - Global Initiatives Task Force
 - Technology Fee Overview
 - Enterprise Architecture / ARB
 - Research Data Center
 - Functional Meetings
- November 18, 2010 - Thursday, 1:30-3:30 PM
 - LUMC Update
 - Technology Briefing & Scorecards
 - Project Portfolio Prioritization
- January 5, 2011 - Wednesday, 1:30-3:30 PM
 - Subcommittee Reports
 - Project Portfolio Prioritization Results
- February 17, 2011 - Thursday, 1:30-3:30 PM
 - LUMC Update
 - Major Projects Status Reviews
- March 31, 2011 - Thursday, 1:30-3:30 PM
 - Subcommittee Reports
- May 26, 2010 - Thursday, 1:30-3:30 PM
 - Project Portfolio Prioritization
- July 7, 2011 - Thursday, 1:30-3:30 PM
 - Project Portfolio Prioritization Results
 - LUMC Update
- August 11, 2011 – Thursday, 1:30-3:30 PM
 - FY13 Budget Input from Subcommittees
- September 22, 2011 - Thursday, 1:30-3:30 PM
 - Subcommittee Reports
- November 10, 2011 - Thursday, 1:30-3:30 PM
 - Technology Briefing & Scorecards
 - LUMC Update